

LIGHT SEAL INSTALLATION INSTRUCTIONS



1. Cover the shutter curtains or lens chamber of your camera

2. Remove the old light seal foam.
I like to use a toothpick for this job.

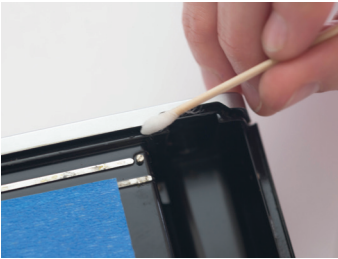
3. Wrap some cotton on a toothpick and dip in alcohol to remove the remaining foam residue.

4. After all the light seal chambers are clean you can start installing the new light seal foam.

5. With a small brush apply Purell hand sanitizer (with no moisture) on the light seal adhesive backing. This will allow you to position the light seal strip freely. Do not attempt to install the light seal dry.

6. After 5 minutes the sanitizer gel will start to dry. Apply some pressure on the light seal strip with a tool to be sure it is in contact with the light seal chamber floor.

7. After 15 minutes it is safe to close your camera. Keep the camera closed for 24 hrs to allow the adhesive to cure (to do its job).



For a video of these instructions

Please visit hugostudio.com/support.html